



CASA BELLA
OF KILDEER



RE/MAX[®]
TOP PERFORMERS
JANE LEE • 847.420.8866
JL-LUXURY.COM

 **FIDELITY**
WES 
847.980.9686
FIDELITYWES.COM

Ranch Elevations

All ranch elevations below
can be paired with any ranch floor plan



R1



R2



R3



R4



R5



R6

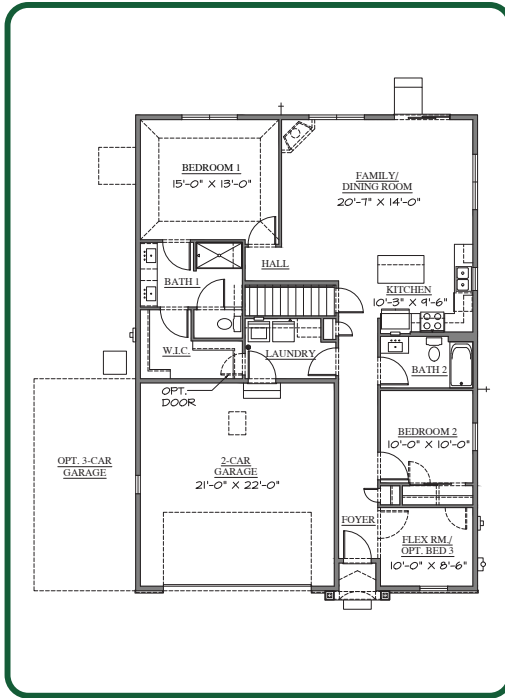


R7



R8

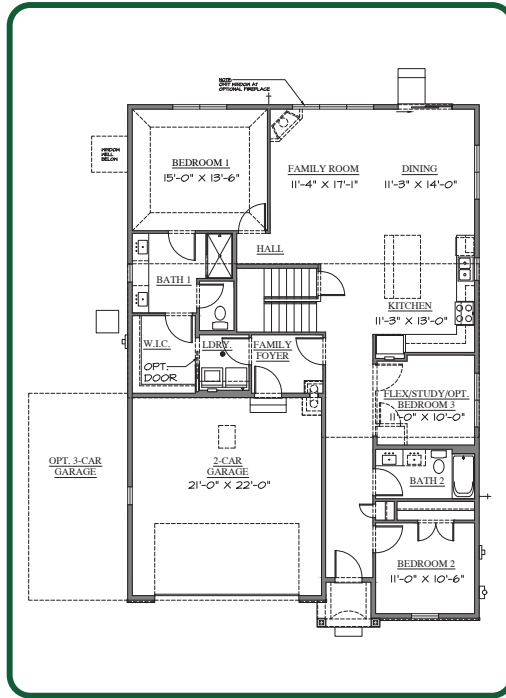
Ranch Floor Plans



Aspen Model

starting at \$599,900

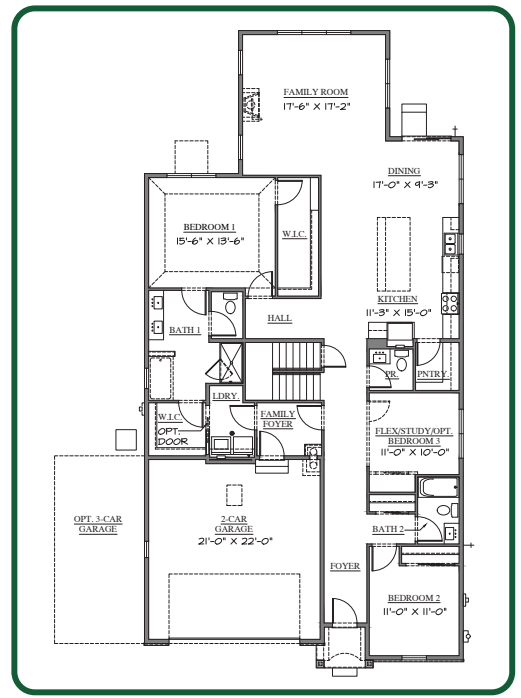
1,408 TOTAL S.F.



Birch Model

starting at \$669,900

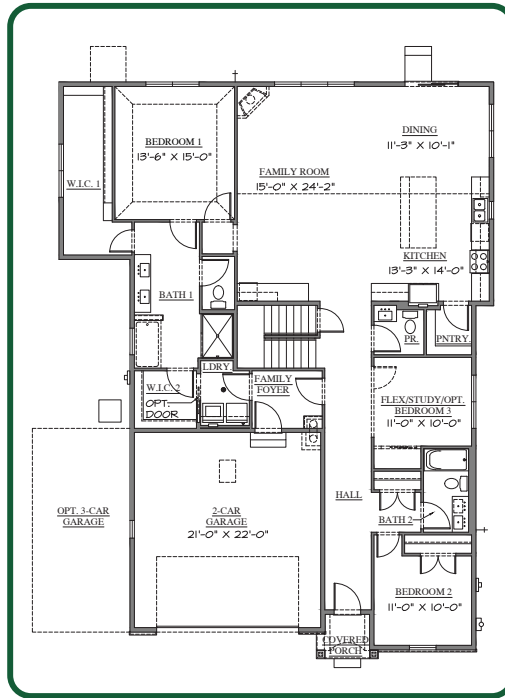
2,325 TOTAL S.F.



Cypress Model

starting at \$699,900

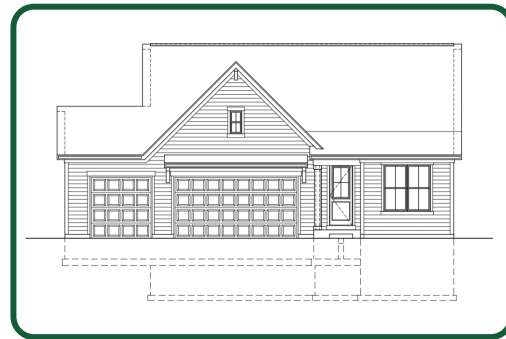
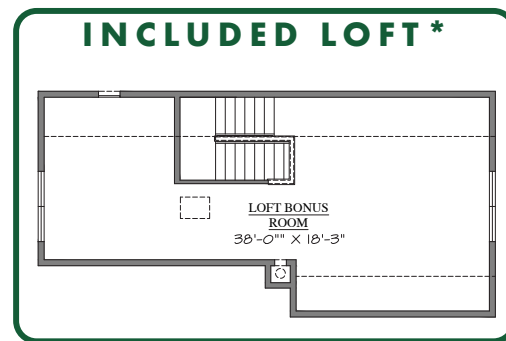
2,787 TOTAL S.F.



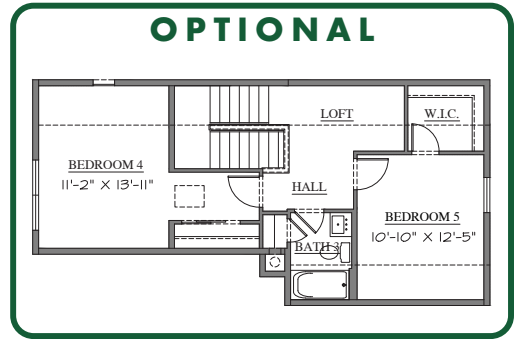
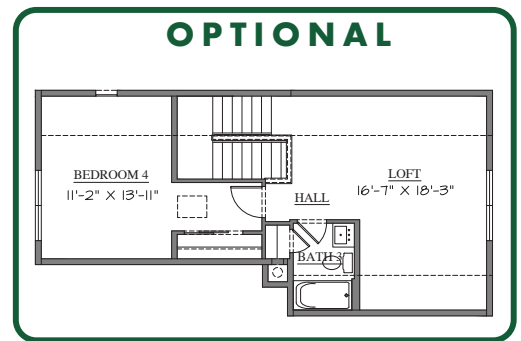
Dogwood Model

at \$699,900

2,809 TOTAL S.F.

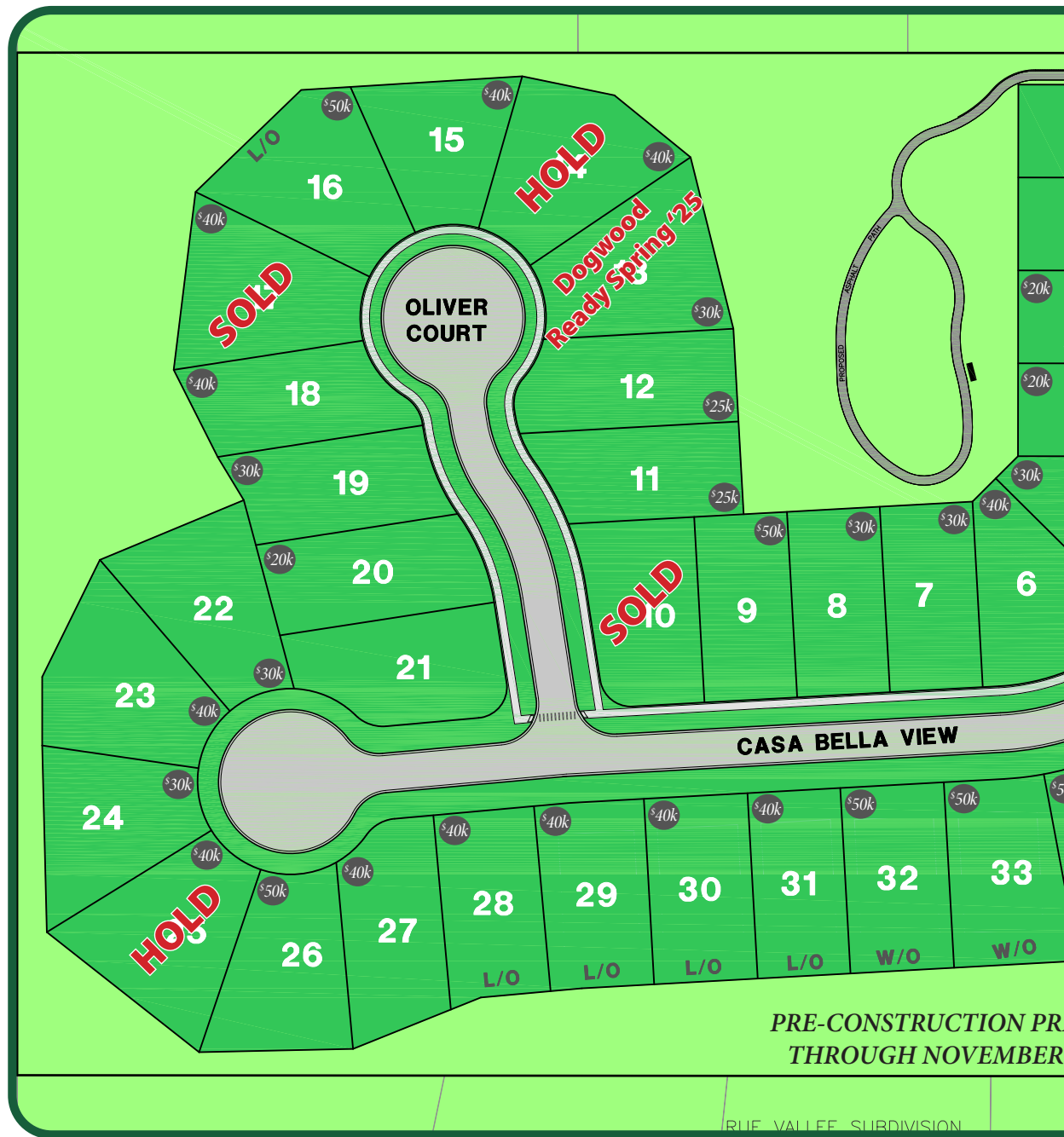


* Birch, Cypress, & Dogwood Models



Loft Options

657 TOTAL S.F.



Elementary School

Isaac Fox Elementary School

Middle

Lake Zurich Middle School

PRESERVATION Intentional cluster design, which safeguards the environment and provides a natural setting

OPEN LAND About 50% of the development dedicated to undeveloped open space

GATEWAY TO KILDEER 250' of picturesque entryway that will buffer Quentin Road.

LIFESTYLE Desirable first floor primary suites, private cul-de-sac living and top-tier amenities



School
School – South Campus

High School
Lake Zurich High School

SETTING Scenic pond with walking paths around nature conservancy and private sidewalks throughout

SERVICES Homesites accommodated by Lake County sanitary sewer and Individual private wells

VALUE Homes offered starting In the \$700's to maintain high property values

MAINTENANCE Thoughtful selection of exterior materials to provide timeless beauty and easy care

RE/MAX
TOP PERFORMERS

847.420.8866
JL-LUXURY.COM

Two-Story Elevations

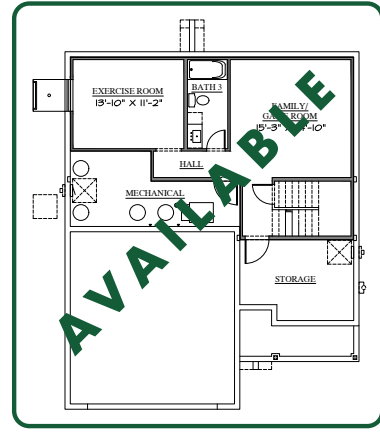
All two-story elevations below can be paired with any two-story floor plan



TS1

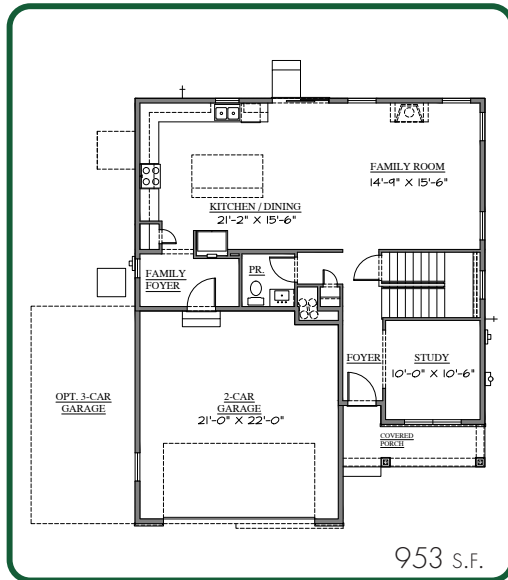


TS2



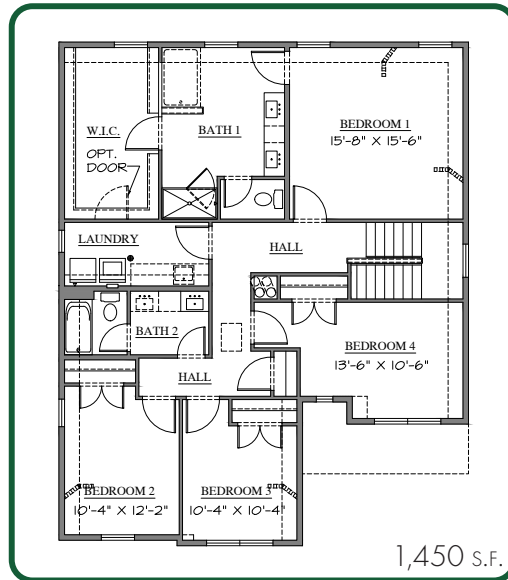
Finished Basement
starting at \$29,900

Two-Story Floor Plans – Evergreen



First Floor

953 S.F.



Second Floor

1,450 S.F.

starting at \$699,900

2,403 TOTAL S.F.



847.980.9686
FIDELITYWES.COM



TS3

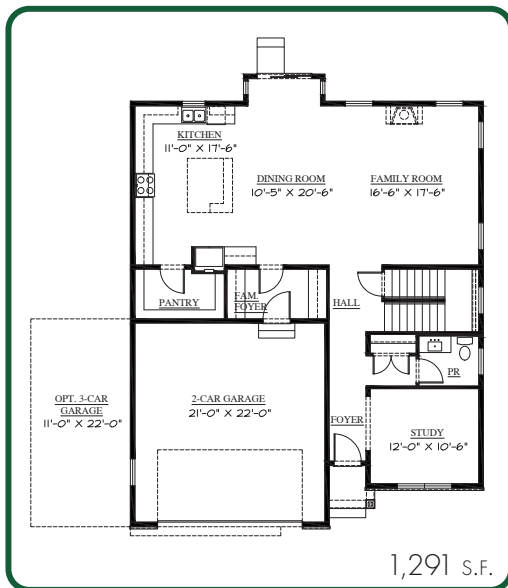


TS4

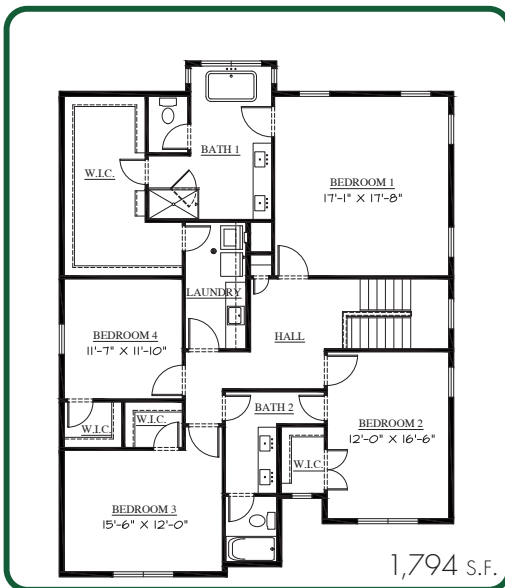
OUR HOMEBUYER IS LOOKING FOR...

- ✓ A safe and scenic private community
- ✓ Convenient location to shopping, dining and entertainment
- ✓ Customizable, spacious floor plans to adapt to the needs of empty-nesters or families
- ✓ Quality of craftsmanship and design
- ✓ Top Rated Schools and ELA township amenities
- ✓ All cared for low maintenance lifestyle

Two-Story Floor Plans – Fir



First Floor



Second Floor

starting at \$777,900
3,048 TOTAL S.F.

CASA BELLA
OF KILDEER



RE/MAX[®]
TOP PERFORMERS
JANE LEE • 847.420.8866
JL-LUXURY.COM



847.980.9686

FIDELITYWES.COM